

MESALAMINE  
delayed-release capsules  
400 mg

Revised: July 2018



121084  
73588SH10

121084  
73588SH10



MESALAMINE  
delayed-release capsules  
400 mg

Revised: July 2018

## HIGHLIGHTS OF PRESCRIBING INFORMATION

These highlights do not include all the information needed to use MESALAMINE DELAYED-RELEASE CAPSULES safely and effectively. See full prescribing information for MESALAMINE DELAYED-RELEASE CAPSULES.

MESALAMINE delayed-release capsules, for oral use  
Initial U.S. Approval: 1987

### INDICATIONS AND USAGE

- MESALAMINE delayed-release capsules is an aminosalicylate indicated for:
- Treatment of mildly to moderately active ulcerative colitis in patients 5 years of age and older (1.1)
  - Maintenance of remission of ulcerative colitis in adults (1.2)

### DOSAGE AND ADMINISTRATION

#### Important Administration Instructions (2.1):

- Two MESALAMINE delayed-release 400 mg capsules have not been shown to be interchangeable or substitutable with one mesalamine delayed-release 800 mg tablet.
- Evaluate renal function prior to initiation of MESALAMINE delayed-release.
- Take with or without food.
- Swallow the capsules whole; do not cut, break, crush or chew.
- For patients who are unable to swallow the capsules, the capsules can be opened and the inner tablets swallowed.

#### Treatment of Mildly to Moderately Active Ulcerative Colitis (2.2):

- Adults: 800 mg (two 400 mg capsules) three times daily for 6 weeks
- Pediatric Patients 5 years or older: See weight-based dosing table in the full prescribing information; twice daily dosing for 6 weeks

#### Maintenance of Remission of Ulcerative Colitis (2.3)

- Adults: 1.6 grams (four 400 mg capsules) daily, in two to four divided doses

### DOSAGE FORMS AND STRENGTHS

Delayed-release capsules (containing four 100 mg tablets): 400 mg (3)

### CONTRAINDICATIONS

Known or suspected hypersensitivity to salicylates or aminosalicylates or to any of the ingredients of MESALAMINE delayed-release capsules (4, 5.3)

## WARNINGS AND PRECAUTIONS

- **Renal Impairment:** Evaluate the risks and benefits of using MESALAMINE delayed-release capsules in patients with known renal impairment or taking nephrotoxic drugs; monitor renal function (5.1, 7.1, 8.6, 13.2)
- **Mesalamine-induced Acute Intolerance Syndrome:** Symptoms may be difficult to distinguish from an ulcerative colitis exacerbation; monitor for worsening symptoms while on treatment; discontinue treatment, if acute intolerance syndrome suspected (5.2)
- **Hypersensitivity Reactions, including myocarditis and pericarditis:** Evaluate patients immediately and discontinue MESALAMINE delayed-release capsules, if a hypersensitivity reaction is suspected (5.3)
- **Hepatic Failure:** Evaluate the risks and benefits of using MESALAMINE delayed-release capsules in patients with known liver impairment (5.4)

### ADVERSE REACTIONS

The most common adverse reactions ( $\geq 5\%$ ) are

- **Adults:** eruption, abdominal pain, constipation, dizziness, rhinitis, back pain, and rash (6.1)
- **Pediatrics:** nasopharyngitis, headache, abdominal pain, dizziness, sinusitis, rash, cough and diarrhea (6.1)

To report SUSPECTED ADVERSE REACTIONS, contact Greenstone LLC at 1-800-438-1985 or FDA at 1-800-FDA-1088 or [www.fda.gov/medwatch](http://www.fda.gov/medwatch)

### DRUG INTERACTIONS

- **Nephrotoxic Agents including NSAIDs:** Increased risk of nephrotoxicity; monitor for changes in renal function and mesalamine-related adverse reactions. (7.1)
- **Azathioprine or 6-Mercaptopurine:** Increased risk of blood disorders; monitor complete blood cell counts and platelet counts (7.2)

### USE IN SPECIFIC POPULATIONS

- **Geriatric Patients:** Increased risk of blood dyscrasias; monitor complete blood cell counts and platelet counts (8.5)

See 17 for PATIENT COUNSELING INFORMATION

Revised 07/2018

## Pediatric Patients 5 to 17 Years Old

A randomized, double-blind, 6-week study of 2 dosage levels of mesalamine delayed-release 400 mg tablets (Study 3) was conducted in 82 pediatric patients 5 to 17 years of age with mildly to moderately active ulcerative colitis. All patients were divided by body weight category (17 to less than 33 kg, 33 to less than 54 kg, and 54 to 90 kg) and randomly assigned to receive a low dosage (1.2, 2, and 2.4 grams per day for the respective body weight category) or a high dosage (2.0, 3.6, and 4.8 grams per day). The high dosage regimen is not recommended because it was not found to be more effective than the recommended low dosage regimen [see Dosage and Administration (2.2), Clinical Studies (14.1)].

Duration of exposure to mesalamine among the 82 patients in the study ranged from 12 to 50 days (mean of 40 days in each dosage group). The majority (88%) of patients in each group were treated for more than 5 weeks. Table 3 provides a summary of the specific reported adverse reactions.

Table 3. Adverse Reactions  $\geq 5\%$  Reported in Study 3 for the Treatment of Mild to Moderate Ulcerative Colitis in Pediatric Patients\*

Adverse Reaction	% of Patients with Adverse Reactions	
	Low Dosage (n=41)	High Dosage (n=41)
Nasopharyngitis	15	12
Headache	10	5
Abdominal pain	10	2
Dizziness	7	2
Sinusitis	7	0
Rash	5	5
Cough	5	0
Diarrhea	5	0
Fatigue	2	10
Pyrexia	0	7
Increased Lipase	0	5

Low Dosage = mesalamine 400 mg delayed-release tablet 1.2 to 2.4 grams/day; High Dosage = mesalamine 400 mg delayed-release tablet 2.0 to 4.8 grams/day. Dosage was dependent on body weight.

Adverse Reactions reported at the 1-week telephone follow-up visit are included.

\* At Least 5% of Patients in the low dosage or high dosage group

Twelve percent of the patients in the low dosage group (5 patients) and 2% of the patients in the high dosage group (1 patient) had serious adverse reactions. The serious adverse reactions consisted of sinusitis, adenovirus infection, and pancreatitis in one patient each in the low dosage group. Abdominal pain and decreased body mass index occurred in one patient and bloody diarrhea and sclerosing cholangitis also occurred in one patient in the low dosage group. Anemia and syncope occurred in one patient in the high dosage group.

Five patients were withdrawn from the study due to adverse reactions: 3 (7%) in the low dosage group (1 patient each with adenovirus infection, sclerosing cholangitis, and pancreatitis) and 2 patients (5%) in the high dosage group (1 patient with increased amylase and increased lipase, and 1 patient with upper abdominal pain).

In general, the nature and severity of reactions in the pediatric population was similar to those reported in adult populations of patients with ulcerative colitis.

#### Maintenance of Remission of Ulcerative Colitis

Clinical studies supporting the use of mesalamine delayed release tablets in the maintenance of remission of ulcerative colitis in adults included a randomized, double-blind, multi-center, placebo-controlled clinical trial of 6 months' duration in 264 patients (Study 4) [see Clinical Studies (14.2)].

In Study 4, a randomized, double-blind, multi-center, placebo-controlled clinical trial of 6 months' duration, 87 patients were randomized to receive mesalamine delayed release tablets 1.6 grams per/day compared to 87 patients randomized to placebo. The average age of patients in Study 4 was 42 years and 55% of patients were male. Adverse reactions leading to study withdrawal in patients using mesalamine delayed release tablets included (each in one patient): anxiety, stomatitis and asthenia.

In addition to the adverse reactions listed in Table 2, the following occurred at a frequency of 2% or greater in patients who received mesalamine delayed-release tablets in Study 4: abdominal enlargement, gastroenteritis, gastrointestinal hemorrhage, infection, joint disorder, nervousness, paresthesia, hemorrhoids, tenesmus, urinary frequency and vision abnormalities.

#### 6.2 Postmarketing Experience

In addition to the adverse reactions reported above in clinical trials involving mesalamine delayed-release tablets, the adverse reactions listed below have been identified during post-approval use of mesalamine delayed-release tablets and other mesalamine-containing products. Because these reactions are reported voluntarily from a population of uncertain size, it is not always possible to reliably estimate their frequency or establish a causal relationship to drug exposure.

**Body as a Whole:** Neck pain, facial edema, edema, lupus-like syndrome, drug fever.

**Cardiovascular:** Pericarditis, myocarditis [see Warnings and Precautions (5.3)].

**Endocrine:** Nephrogenic diabetes insipidus.

**Gastrointestinal:** Anorexia, pancreatitis, gastritis, increased appetite, cholecystitis, dry mouth, oral ulcers, perforated peptic ulcer, bloody diarrhea.

**Hematologic:** Agranulocytosis, aplastic anemia, thrombocytopenia, eosinophilia, leukopenia, anemia, lymphadenopathy.

**Musculoskeletal:** Gout.

**Nervous:** Depression, somnolence, emotional lability, hyperesthesia, vertigo, confusion, tremor, peripheral neuropathy, transverse myelitis, Guillain-Barré syndrome, intracranial hypertension.

**Renal:** Renal failure, interstitial nephritis, minimal change nephropathy [see Warnings and Precautions (5.1)].

**Respiratory/Pulmonary:** Eosinophilic pneumonia, interstitial pneumonitis, asthma exacerbation, pleuritis.

**Skin:** Alopecia, psoriasis, pyoderma gangrenosum, dry skin, erythema nodosum, urticaria.

**Special Senses:** Eye pain, taste perversion, blurred vision, tinnitus.

**Urogenital:** Dysuria, urinary urgency, hematuria, epididymitis, menorrhagia, reversible oligospermia.

**Laboratory Abnormalities:** Elevated AST (SGOT) or ALT (SGPT), elevated alkaline phosphatase, elevated GGT, elevated LDH, elevated bilirubin, elevated serum creatinine and BUN.

## 7 DRUG INTERACTIONS

### 7.1 Nephrotoxic Agents, Including Non-Steroidal Anti-Inflammatory Drugs

The concurrent use of mesalamine with known nephrotoxic agents, including non-steroidal anti-inflammatory drugs (NSAIDs) may increase the risk of nephrotoxicity. Monitor patients taking nephrotoxic drugs for changes in renal function and mesalamine-related adverse reactions [see Warnings and Precautions (5.1)].

### 7.2 Azathioprine or 6-Mercaptopurine

The concurrent use of mesalamine with azathioprine or 6-mercaptopurine may increase the risk for blood disorders. If concomitant use of MESALAMINE delayed-release capsules and azathioprine or 6-mercaptopurine cannot be avoided, monitor blood tests, including complete blood cell counts and platelet counts.

## 8 USE IN SPECIFIC POPULATIONS

### 8.1 Pregnancy

#### Risk Summary

There are no adequate and well controlled studies of MESALAMINE delayed-release capsules use in pregnant women. Limited published human data on mesalamine show no increase in the overall rate of congenital malformations. Some data show an increased rate of preterm birth, stillbirth, and low birth weight; however, these adverse pregnancy outcomes are also associated with active inflammatory bowel disease. Furthermore, all pregnancies, regardless of drug exposure, have a background rate of 2 to 4% for major malformations, and 15 to 20% for pregnancy loss. No evidence of fetal harm was observed in animal reproduction studies of mesalamine in rats and rabbits at oral doses approximately 1.9 times (rat) and 3.9 times (rabbit) the recommended human dose. MESALAMINE delayed-release capsules should be used during pregnancy only if clearly needed.

#### Human Data

Mesalamine crosses the placenta. In prospective and retrospective studies of over 600 women exposed to mesalamine during pregnancy, the observed rate of congenital malformations was not increased above the background rate in the general population. Some data show an increased rate of preterm birth, stillbirth, and low birth weight, but it is unclear whether this was due to underlying maternal disease, drug exposure, or both, as active inflammatory bowel disease is also associated with adverse pregnancy outcomes.

## FULL PRESCRIBING INFORMATION: CONTENTS\*

### 1 INDICATIONS AND USAGE

- 1.1 Treatment of Mildly to Moderately Active Ulcerative Colitis
- 1.2 Maintenance of Remission of Ulcerative Colitis

### 2 DOSAGE AND ADMINISTRATION

- 2.1 Important Administration Instructions
- 2.2 Dosage for Treatment of Mildly to Moderately Active Ulcerative Colitis
- 2.3 Dosage for Maintenance of Remission of Ulcerative Colitis

### 3 DOSAGE FORMS AND STRENGTHS

### 4 CONTRAINDICATIONS

### 5 WARNINGS AND PRECAUTIONS

- 5.1 Renal Impairment
- 5.2 Mesalamine-Induced Acute Intolerance Syndrome
- 5.3 Hypersensitivity Reactions
- 5.4 Hepatic Failure

### 6 ADVERSE REACTIONS

- 6.1 Clinical Trials Experience
- 6.2 Postmarketing Experience

### 7 DRUG INTERACTIONS

- 7.1 Nephrotoxic Agents, Including Non-Steroidal Anti-Inflammatory Drugs
- 7.2 Azathioprine or 6-Mercaptopurine

### 8 USE IN SPECIFIC POPULATIONS

- 8.1 Pregnancy
- 8.2 Lactation
- 8.4 Pediatric Use
- 8.5 Geriatric Use
- 8.6 Renal Impairment

### 10 OVERDOSAGE

### 11 DESCRIPTION

### 12 CLINICAL PHARMACOLOGY

- 12.1 Mechanism of Action
- 12.3 Pharmacokinetics

### 13 NONCLINICAL TOXICOLOGY

- 13.1 Carcinogenesis, Mutagenesis, Impairment of Fertility
- 13.2 Animal Toxicology and/or Pharmacology

### 14 CLINICAL STUDIES

- 14.1 Treatment of Mildly to Moderately Active Ulcerative Colitis
- 14.2 Maintenance of Remission of Ulcerative Colitis

### 15 REFERENCES

### 16 HOW SUPPLIED/STORAGE AND HANDLING

### 17 PATIENT COUNSELING INFORMATION

\*Sections or subsections omitted from the full prescribing information are not listed.

## FULL PRESCRIBING INFORMATION

### 1 INDICATIONS AND USAGE

#### 1.1 Treatment of Mildly to Moderately Active Ulcerative Colitis

MESALAMINE delayed-release capsules is indicated for the treatment of mildly to moderately active ulcerative colitis in patients 5 years of age and older.

#### 1.2 Maintenance of Remission of Ulcerative Colitis

MESALAMINE delayed-release capsules is indicated for the maintenance of remission of ulcerative colitis in adults.

### 2 DOSAGE AND ADMINISTRATION

#### 2.1 Important Administration Instructions

- Two MESALAMINE delayed-release capsules 400 mg capsules have not been shown to be interchangeable or substitutable with one mesalamine delayed-release 800 mg tablet.
- Evaluate renal function prior to initiation of MESALAMINE delayed-release capsules.
- Take MESALAMINE delayed-release capsules with or without food.
- Swallow the capsules whole; do not cut, break, crush or chew the capsules.
- For patients who are unable to swallow the capsules whole, carefully open the capsule(s) and swallow the contents (four 100 mg tablets).
  - o Open the number of capsules required to make up a complete dose [see Dosage and Administration (2.2, 2.3)].
  - o There are 4 tablets per capsule. Ensure all tablets per capsule are swallowed and no tablets are retained in the mouth.
  - o Swallow the tablets whole; do not cut, break, crush or chew the tablets.
- Intact, partially intact, and/or tablet shells have been reported in the stool; Instruct patients to contact their physician if this occurs repeatedly. Protect MESALAMINE delayed-release capsules capsules from moisture. Close the container tightly and leave any desiccant pouches present in the bottle along with the tablets.

#### 2.2 Dosage for Treatment of Mildly to Moderately Active Ulcerative Colitis

##### Adults

For adults, the recommended dosage of MESALAMINE delayed-release capsules is 800 mg (two 400 mg capsules) three times daily (total daily dosage of 2.4 grams) for a duration of 6 weeks [see Clinical Studies (14.1)].

##### Pediatrics

For pediatric patients 5 years of age and older, the recommended total daily dosage of MESALAMINE delayed-release capsules is weight-based (up to maximum of 2.4 grams per day) divided into two daily doses for a duration of 6 weeks (see Table 1).

Table 1. Pediatric Dosage by Weight

Weight Group (kg)	Daily Dosage (mg/kg/day)	Maximum Daily Dosage (grams per day)	Morning Dosage	Afternoon Dosage
17 to 32	36 to 71	1.2	two 400 mg capsules	one 400 mg capsules
33 to 53	37 to 61	2	three 400 mg capsules	two 400 mg capsules
54 to 90	27 to 44	2.4	three 400 mg capsules	three 400 mg capsules

#### 2.3 Dosage for Maintenance of Remission of Ulcerative Colitis

The recommended dosage of MESALAMINE delayed-release capsules in adults is 1.6 grams (four 400 mg capsules) daily in two to four divided doses.

### 3 DOSAGE FORMS AND STRENGTHS

MESALAMINE delayed-release capsules are clear capsules and imprinted "WC 400mg" in black ink. Each capsule contains four reddish-brown coated 100 mg mesalamine tablets.

### 4 CONTRAINDICATIONS

MESALAMINE delayed-release capsules is contraindicated in patients with known or suspected hypersensitivity to salicylates or aminosalicylates or to any of the ingredients of MESALAMINE delayed-release capsules [see Warnings and Precautions (5.3), Adverse Reactions (6.2), Description (11)].

### 5 WARNINGS AND PRECAUTIONS

#### 5.1 Renal Impairment

Renal impairment, including minimal change nephropathy, acute and chronic interstitial nephritis, and renal failure, has been reported in patients taking products such as MESALAMINE delayed-release capsules that contain mesalamine or are converted to mesalamine [see Adverse Reactions (6.2)].

Evaluate renal function prior to initiation of MESALAMINE delayed-release capsules and periodically while on therapy.

Evaluate the risks and benefits of using MESALAMINE delayed-release capsules in patients with known renal impairment or history of renal disease or taking concomitant nephrotoxic drugs [see Drug Interactions (7.1), Use in Specific Populations (8.6), Nonclinical Toxicology (13.2)].

#### 5.2 Mesalamine-Induced Acute Intolerance Syndrome

Mesalamine has been associated with an acute intolerance syndrome that may be difficult to distinguish from an exacerbation of ulcerative colitis. Although the exact frequency of occurrence has not been determined, it has occurred in 3% of controlled clinical trials of mesalamine or sulfasalazine. Symptoms include cramping, abdominal pain, bloody diarrhea, and sometimes fever, headache, and rash. Monitor patients closely for worsening of these symptoms while on treatment. If acute intolerance syndrome is suspected, promptly discontinue treatment with MESALAMINE delayed-release capsules.

### Table 2. Most Common Adverse Reactions Reported in Study 1 for the Treatment of Mild to Moderate Ulcerative Colitis in Adults\*

Adverse Reaction	% of Patients with Adverse Reactions	
	Mesalamine Delayed release 2.4 grams per day (n = 53)	Placebo (n = 52)
Eruaction	26	19
Abdominal pain	21	12
Constipation	11	0
Dizziness	9	8
Rhinitis	8	6
Back pain	6	4
Rash	6	4
Dyspepsia	4	0
Flu syndrome	4	2

\* At Least 2% of Patients in the Mesalamine Delayed Release Tablets Group and at a Rate Greater than Placebo



#### Animal data

Reproduction studies with mesalamine were performed during organogenesis in rats and rabbits at oral doses up to 480 mg/kg/day. There was no evidence of impaired fertility or harm to the fetus. These mesalamine doses were about 1.9 times (rat) and 3.9 times (rabbit) the recommended human dose, based on body surface area.

#### 8.2 Lactation

Mesalamine and its N-acetyl metabolite are present in human milk. In published lactation studies, maternal mesalamine doses from various oral and rectal formulations and products ranged from 500 mg to 3 g daily. The concentration of mesalamine in milk ranged from non-detectable to 0.11 mg/L. The concentration of the N-acetyl-5-aminosalicylic acid metabolite ranged from 5 to 18.1 mg/L. Based on these concentrations, estimated infant daily doses for an exclusively breastfed infant are 0 to 0.017 mg/kg/day of mesalamine and 0.75 to 2.72 mg/kg/day of N-acetyl-5-aminosalicylic acid. The developmental and health benefits of breastfeeding should be considered along with the mother's clinical need for MESALAMINE delayed-release capsules and any potential adverse effects on the breastfed child from the drug or from the underlying maternal condition. Caution should be exercised when MESALAMINE delayed-release capsules is administered to a nursing woman.

#### 8.4 Pediatric Use

The safety and effectiveness of MESALAMINE delayed-release capsules for the treatment of mildly to moderately active ulcerative colitis in pediatric patients 5 to 17 years of age has been established based on adequate and well-controlled studies using mesalamine delayed-release 400 mg tablets. Use of MESALAMINE delayed-release capsules in these pediatric age groups is supported by evidence from adequate and well controlled studies of mesalamine delayed-release 400 mg tablets in adults and a single 6-week study in 82 pediatric patients 5 to 17 years of age [see *Adverse Reactions (6.1), Clinical Pharmacology (12.3) and Clinical Studies (14.1)*].

The safety and effectiveness of MESALAMINE delayed-release capsules for the treatment of mildly to moderately active ulcerative colitis in pediatric patients below the age of 5 years have not been established. The safety and effectiveness of MESALAMINE delayed-release capsules in the maintenance of remission of ulcerative colitis in pediatric patients have not been established.

#### 8.5 Geriatric Use

Clinical studies of mesalamine delayed-release tablets did not include sufficient numbers of patients aged 65 and over to determine whether they respond differently than younger patients. Reports from uncontrolled clinical studies and postmarketing experience suggest a higher incidence of blood dyscrasias (agranulocytosis, neutropenia, pancytopenia) in subjects receiving mesalamine delayed-release tablets who are 65 years or older compared to younger patients. Monitor complete blood cell counts and platelet counts in elderly patients during treatment with MESALAMINE delayed-release capsules.

In general, the greater frequency of decreased hepatic, renal, or cardiac function, and of concomitant disease or other drug therapy in elderly patients should be considered when prescribing MESALAMINE delayed-release capsules [see *Use in Specific Populations (8.6)*].

#### 8.6 Renal Impairment

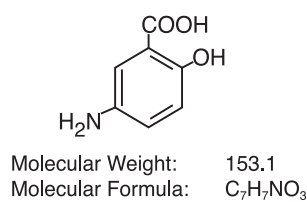
Mesalamine is known to be substantially excreted by the kidney, and the risk of toxic reactions may be greater in patients with impaired renal function. Evaluate renal function in all patients prior to initiation and periodically while on MESALAMINE delayed-release capsules therapy. Monitor patients with known renal impairment or history of renal disease or taking nephrotoxic drugs for decreased renal function and mesalamine-related adverse reactions. [see *Warnings and Precautions (5.1), Drug Interactions (7.1), Adverse Reactions (6.2)*].

#### 10 OVERDOSAGE

There is no specific antidote for mesalamine overdose and treatment for suspected acute severe toxicity with MESALAMINE delayed-release capsules should be symptomatic and supportive. This may include prevention of further gastrointestinal tract absorption, correction of fluid electrolyte imbalance, and maintenance of adequate renal function. MESALAMINE delayed-release capsule is a pH dependent delayed-release product and this factor should be considered when treating a suspected overdose.

#### 11 DESCRIPTION

Each MESALAMINE delayed-release capsule for oral administration contains four 100 mg tablets of mesalamine, an aminosalicylate. MESALAMINE delayed-release capsules contain acrylic based resin, methacrylic acid and methyl methacrylate copolymer (Eudragit S), which dissolves at pH 7 or greater and releases mesalamine in the terminal ileum and beyond for topical anti-inflammatory action in the colon. Mesalamine (also referred to as 5-aminosalicylic acid or 5-ASA) has the chemical name 5-amino-2-hydroxybenzoic acid. Its structural formula is:



**Inactive Ingredients:** Each capsule contains colloidal silicon dioxide, dibutyl sebacate, ferric oxide red, ferric oxide yellow, lactose monohydrate, magnesium stearate, methacrylic acid and methyl methacrylate copolymer (Eudragit S), polyethylene glycol, povidone, sodium starch glycolate, talc and hydroxypropyl methylcellulose (HPMC).

#### 12 CLINICAL PHARMACOLOGY

##### 12.1 Mechanism of Action

The mechanism of action of mesalamine is unknown, but appears to be topical rather than systemic. Mucosal production of arachidonic acid metabolites, both through the cyclooxygenase pathways, that is, prostanooids, and through the lipoxygenase pathways, that is, leukotrienes and hydroxyecosatetraenoic acids, is increased in patients with chronic ulcerative colitis, and it is possible that mesalamine diminishes inflammation by blocking cyclooxygenase and inhibiting prostaglandin production in the colon.

##### 12.3 Pharmacokinetics

###### Absorption

Approximately 28% of mesalamine in mesalamine delayed-release formulation is absorbed after oral ingestion. Following replicate single dose oral administration of MESALAMINE delayed-release 400 mg capsule containing four 100 mg tablets in healthy subjects (N = 146) under fasted conditions, the mean C<sub>max</sub>, AUC<sub>0-48</sub> and AUC<sub>0-12</sub> values were 150 ± 235 ng/mL, 640 ± 521 ng-h/mL, and 909 ± 777 ng-h/mL, respectively. The median [range] T<sub>max</sub> for mesalamine following MESALAMINE delayed-release 400 mg capsule containing four 100 mg tablets was approximately 10 hours [5.5 – 48 hours], reflecting the delayed-release characteristics of the formulation.

A high fat meal increased systemic exposure of mesalamine (geometric mean C<sub>max</sub>: ↑ 32%; AUC<sub>0-48 h</sub>: ↑ 46%; AUC: ↑ 29%) and delayed the median t<sub>max</sub> by approximately 4 hours compared to results in the fasted state. The observed differences in mesalamine exposure due to concomitant food intake are not considered to be clinically relevant at the total daily dosage of 2.4 grams per day.

###### Elimination

###### Metabolism

The absorbed mesalamine is rapidly acetylated in the gut mucosal wall and by the liver to N-acetyl-5-aminosalicylic acid.

###### Excretion

Absorbed mesalamine is excreted mainly by the kidney as N-acetyl-5-aminosalicylic acid. Unabsorbed mesalamine is excreted in feces.

After intravenous administration, the elimination half-life of mesalamine is reported to be approximately 40 minutes. After oral dosing, the median terminal t<sub>1/2</sub> values for mesalamine are usually about 25 hours, but are variable, ranging from 1.5 to 296 hours. There is a large inter-subject and intra-subject variability in the plasma concentrations of mesalamine and N-acetyl-5-aminosalicylic acid and in their terminal half-lives following administration of MESALAMINE delayed-release capsules.

###### Specific Populations

###### Pediatric Patients

In a dose-ranging pharmacokinetic study evaluating 30, 60 and 90 mg/kg per day doses of mesalamine delayed-release 400 mg tablets administered twice daily for four weeks, the mean C<sub>avg</sub> values of mesalamine in pediatric ulcerative colitis patients ranged from approximately 400 ng/mL to 2100 ng/mL based on data from all dose levels.

In a study evaluating mesalamine delayed-release tablets in pediatric ulcerative colitis patients (Study 3), mean plasma concentrations of mesalamine (based on sparse sampling) were 820 to 988 ng/mL at the low dose level (that is, 1.2, 2, or 2.4 grams/day based on body weight strata of 17 to less than 33 kg, 33 to less than 54 kg, and 54 to 90 kg, respectively).

#### 13 NONCLINICAL TOXICOLOGY

##### 13.1 Carcinogenesis, Mutagenesis, Impairment of Fertility

###### Carcinogenesis

Mesalamine was not carcinogenic at dietary doses of up to 480 mg/kg/day in rats and 2000 mg/kg/day in mice, which are about 2.9 and 6.1 times the maximum recommended maintenance dose of MESALAMINE delayed-release capsules of 1.6

grams per day or 26.7 mg/kg/day, based on 60 kg body weight, respectively, based on body surface area.

###### Mutagenesis

Mesalamine was negative in the Ames assay for mutagenesis, negative for induction of sister chromatid exchanges (SCE) and chromosomal aberrations in Chinese hamster ovary cells *in vitro*, and negative for induction of micronuclei (MN) in mouse bone marrow polychromatic erythrocytes.

###### Impairment of Fertility

Mesalamine, at oral doses up to 480 mg/kg/day (about 1.9 times the recommended human treatment dose on a body surface area basis), was found to have no effect on fertility or reproductive performance of male and female rats.

##### 13.2 Animal Toxicology and/or Pharmacology

In animal studies (rats, mice, dogs), the kidney was the principal organ for toxicity. (In the following, comparisons of animal dosing to recommended human dosing are based on body surface area and a 2.4 grams per day dose for a 60 kg person.)

Mesalamine causes renal papillary necrosis in rats at single doses of approximately 750 mg/kg to 1000 mg/kg (approximately 3 to 4 times the recommended human dose based on body surface area). Doses of 170 and 360 mg/kg/day (about 0.7 and 1.5 times the recommended human dose based on body surface area) given to rats for six months produced papillary necrosis, papillary edema, tubular degeneration, tubular mineralization, and urothelial hyperplasia.

In mice, oral doses of 4000 mg/kg/day mesalamine (approximately 8 times the recommended human dose based on body surface area) for three months produced tubular nephrosis, multifocal/diffuse tubulo-interstitial inflammation, and multifocal/diffuse papillary necrosis.

In dogs, single doses of 6000 mg (approximately 8 times the recommended human dose based on body surface area) of delayed-release mesalamine tablets resulted in renal papillary necrosis but were not fatal. Renal changes have occurred in dogs given chronic administration of mesalamine at doses of 80 mg/kg/day (1.1 times the recommended human dose based on body surface area).

#### 14 CLINICAL STUDIES

The safety and efficacy of MESALAMINE delayed-release capsules has been established based on adequate and well-controlled studies of mesalamine delayed-release tablets. Below is a description of the results of the adequate and well-controlled studies of mesalamine delayed-release tablets for the treatment of mildly to moderately active ulcerative colitis in adults and pediatric patients 5 to 17 years of age and the maintenance of remission of ulcerative colitis in adults.

##### 14.1 Treatment of Mildly to Moderately Active Ulcerative Colitis

###### Adults

Two placebo-controlled studies (Studies 1 and 2) have demonstrated the efficacy of mesalamine delayed-release tablets in patients with mildly to moderately active ulcerative colitis.

In one randomized, double-blind, multi-center, placebo-controlled clinical trial of 6 weeks' duration in 158 patients (Study 1), patients received mesalamine delayed release dosages of 1.6 grams per day (800 mg twice a day; n=53) and 2.4 grams per day (800 mg three times a day; n=53), compared to placebo (n=52). The scoring system for determination of treatment efficacy included assessment of stool frequency, rectal bleeding, sigmoidoscopic findings, patient's functional assessment, and physician global assessment. At the dosage of 2.4 grams per day, 21 of 43 (49%) patients using mesalamine delayed release tablets showed an improvement in sigmoidoscopic appearance of the bowel compared to 12 of 44 (27%) patients using placebo (p = 0.048). In addition, significantly more patients in the mesalamine delayed release tablets 2.4 grams per day group showed improvement in rectal bleeding and stool frequency. The 1.6 grams per day dosage regimen is not recommended because it did not produce consistent evidence of effectiveness [see *Dosage and Administration (2.2)*].

In a second randomized, double-blind, placebo-controlled clinical trial of 6 weeks' duration in 87 patients (Study 2), patients received mesalamine delayed release tablets of 1.6 grams per day (400 mg four times a day; n=11) and 4.8 grams per day (1.2 grams four times a day; n=38), compared to placebo four times a day (n=38). mesalamine delayed release tablets 4.8 grams per day for 6 weeks resulted in sigmoidoscopic improvement in 28 of 38 (74%) patients compared to 10 of 38 (26%) placebo patients (p less than 0.001). Also, more patients in the mesalamine delayed release tablets 4.8 grams per day group than the placebo group showed improvement in overall symptoms. The 4.8 grams per day dosage regimen is not recommended because greater efficacy was not demonstrated with this dosage compared to the 2.4 grams per day dosage [see *Dosage and Administration (2.2)*].

###### Pediatrics

The safety and effectiveness of mesalamine delayed release in pediatric patients 5 to 17 years of age for treatment of mildly to moderately active ulcerative colitis are supported by evidence from adequate and well controlled studies of mesalamine delayed release in adults and a single study in pediatric patients.

A randomized, double-blind, 6-week study of two dosage levels of mesalamine delayed release tablets (Study 3) was conducted in 82 pediatric patients 5 to 17 years of age with mildly or moderately active ulcerative colitis defined as a score of 10 to 55 on the Pediatric Ulcerative Colitis Activity Index (PUCAI) (which includes assessment of abdominal pain, rectal bleeding, stool consistency, number of stools per 24 hours, presence of nocturnal bowel movement and activity level, and has a total maximum score of 85; each of the subscales are scored from 0 to 10 except rectal bleeding which is scored from 0 to 30, and number of stools per 24 hours which is scored from 0 to 15) and rectal bleeding and stool frequency Mayo subscale scores of ≥1 (each of these subscales are scored from zero (normal) to three (most severe)).<sup>1,2</sup>

All patients were divided by weight category (17 to less than 33 kg, 33 to less than 54 kg, and 54 to 90 kg) and randomly assigned to receive a low dosage (1.2, 2, and 2.4 grams per day for the respective weight category) or a high dosage (2, 3.6, and 4.8 grams per day). Doses were administered every 12 hours.

The proportion of patients who achieved success based on the Truncated Mayo Score (TM-Mayo) (based on the stool frequency and rectal bleeding subscores of the Mayo Score) and based on the PUCAI was measured after 6 weeks of treatment. Success based on TM-Mayo was defined as either partial response (improvement from baseline in stool frequency or rectal bleeding subscores with no worsening in the other) or complete response (both stool frequency and rectal bleeding subscores equal 0). Success based on PUCAI was defined as either partial response (PUCAI reduction of greater than or equal to 20 points from Baseline to Week 6 with Week 6 score greater than or equal to 10) or complete response (PUCAI less than 10 at Week 6).

There were 41 patients in the low dosage group and 41 patients in the high dosage group who received at least one dose of mesalamine delayed-release 400 mg tablets; 36 patients in each dosage group completed the study. Patients were considered treatment failures if they did not achieve success or dropped out due to adverse reaction or lack of efficacy.

At Week 6, 73% of the patients in the low dosage group, and 70% of the patients in the high dosage group achieved success based on the TM-Mayo; 34% of the patients in the low dosage group and 43% of the patients in the high dosage group achieved complete response. At Week 6, 56% of the patients in the low dosage group, and 55% of the patients in the high dosage group achieved success based on the PUCAI; 46% of the patients in the low dosage group and 43% of the patients in the high dosage group achieved complete response.

The high dosage regimen is not recommended because it was not more effective than the low dosage regimen [see *Dosage and Administration (2.2)*].

##### 14.2 Maintenance of Remission of Ulcerative Colitis

###### Adults

In a randomized, double-blind, multi-center, placebo-controlled clinical trial of 6 months' duration in 264 patients (Study 4), patients received mesalamine delayed-release tablets of 0.8 grams per day (400 mg twice a day; n = 90) and 1.6 grams per day (400 mg four times a day; n = 87), compared to placebo four times a day (n = 87). The proportion of patients treated with 0.8 grams per day who maintained endoscopic remission was not statistically significant compared to placebo; the 0.8 grams per day dosage regimen is not recommended [see *Dosage and Administration (2.3)*]. The number of patients using mesalamine delayed-release tablets 1.6 grams per day who maintained endoscopic remission of ulcerative colitis was 61 of 87 (70%) compared with 42 of 87 (48%) of placebo patients (p = 0.005).

A pooled efficacy analysis of 4 maintenance trials compared mesalamine delayed release tablets at dosages of 0.8 to 2.8 grams per day, in divided doses ranging from twice daily to four times per day, with sulfasalazine, at dosages of 2 to 4 grams per day. Treatment success was seen in 59 of 98 (59%) patients using mesalamine delayed release tablets and 70 of 102 (69%) patients using sulfasalazine, a non-significant difference.

#### 15 REFERENCES

1. Turner D, Otley AR, Mack D, et al. Development, validation, and evaluation of a pediatric ulcerative colitis activity index: A prospective multicenter study. *Gastroenterology*. 2007;133:423-432.
2. Schroeder KW, Tremaine WJ, Ilstrup DM. Coated oral 5-aminosalicylic acid therapy for mildly to moderately active ulcerative colitis. *N Engl J Med*. 1987;317(26):1625-9.

##### 16 HOW SUPPLIED/STORAGE AND HANDLING

MESALAMINE delayed-release capsules are available as clear capsules and imprinted with "WC 400mg" in black ink. Each capsule contains four reddish-brown coated 100 mg mesalamine tablets.

NDC 59762-0117-1 Bottle of 180 capsules

Store at controlled room temperature 20° to 25° C (68° to 77° F); excursions are permitted 15° to 30° C (59° to 86° F). [See USP Controlled Room Temperature]

#### 17 PATIENT COUNSELING INFORMATION

##### Administration

- Inform patients that if they are switching from a previous oral mesalamine therapy to MESALAMINE delayed-release capsules to discontinue their previous oral mesalamine therapy and follow the dosing instructions for MESALAMINE delayed-release capsules. Inform patients that two MESALAMINE delayed-release 400 mg capsules cannot be substituted for one mesalamine delayed-release 800 mg tablet.
- Inform patients that MESALAMINE delayed-release capsules can be taken with or without food.
- Instruct patients to swallow the MESALAMINE delayed-release capsules whole. Do not cut, break, crush or chew the capsules.
- For patients who are unable to swallow the capsules whole, carefully open the capsules and swallow the contents (four 100 mg tablets).
  - o Open the number of capsules required to make up a complete dose.
  - o There are 4 tablets per capsule. Ensure all tablets per capsule are swallowed and no tablets are retained in the mouth.
  - o Swallow the tablets whole; do not cut, break, crush or chew the tablets.
- Inform patients that intact, partially intact, and/or tablet shells have been reported in the stool. Instruct patients to contact their physician if this occurs repeatedly.
- Instruct patients to protect MESALAMINE delayed-release capsules from moisture. Instruct patients to close the container tightly and to leave any desiccant pouches present in the bottle along with the capsules.

##### Renal Impairment

- Inform patients that MESALAMINE delayed-release capsules may decrease their renal function, especially if they have known renal impairment or are taking nephrotoxic drugs, and periodic monitoring of renal function will be performed while they are on therapy. Advise patients to complete all blood tests ordered by their physician.

##### Mesalamine-Induced Acute Intolerance Syndrome

- Instruct patients to report to their physician if they experience new or worsening symptoms of cramping, abdominal pain, bloody diarrhea, and sometimes fever, headache, and rash.

##### Hypersensitivity Reactions

- Inform patients of the signs and symptoms of hypersensitivity reactions, and advise them seek immediate medical care should signs and symptoms occur.

##### Hepatic Failure

- Inform patients with known liver disease of the signs and symptoms of worsening liver function and advise them to report to their physician if they experience such signs or symptoms.

##### Blood Disorders

- Inform elderly patients and those taking azathioprine or 6-mercaptopurine of the risk for blood disorders and the need for periodic monitoring of complete blood cell counts and platelet counts while on therapy. Advise patients to complete all blood tests ordered by their physician.

#### GREENSTONE® BRAND

##### Distributed by:

#### Greenstone LLC

Peapack, NJ 07977

© 2018 Allergan. All rights reserved.

Patented. See [www.allergan.com/patents](http://www.allergan.com/patents)

For more information, go to [www.greenstonellc.com](http://www.greenstonellc.com) or call 1-800-438-1985.